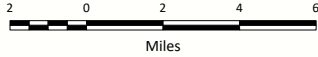
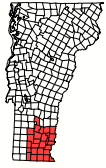


2026 Windham Regional Plan

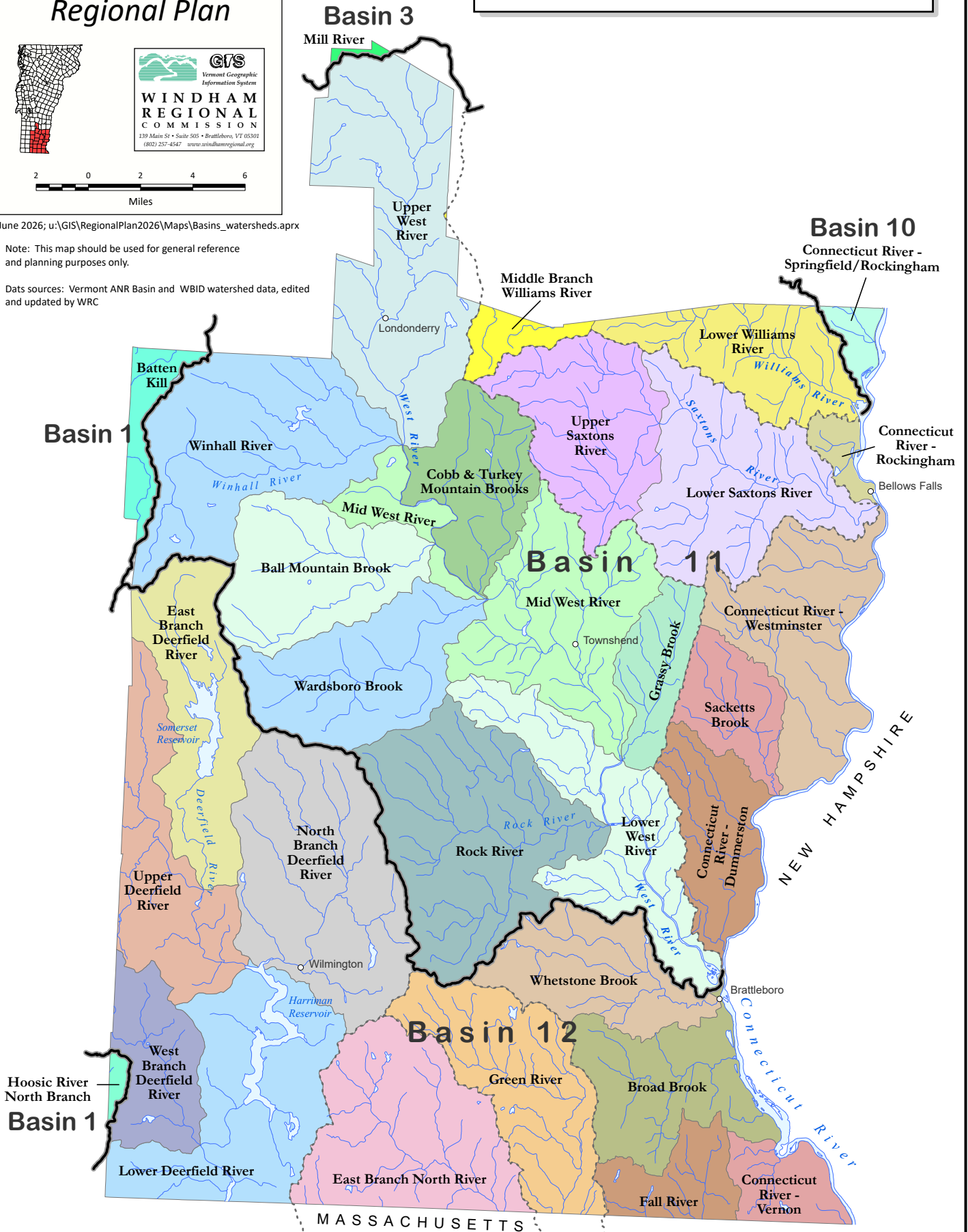


Basins and Watersheds

June 2026; u:\GIS\RegionalPlan2026\Maps\Basins_watersheds.aprx

Note: This map should be used for general reference and planning purposes only.

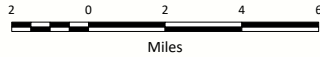
Data sources: Vermont ANR Basin and WBID watershed data, edited and updated by WRC



2026 Windham Regional Plan



139 Main St • Suite 505 • Brattleboro, VT 05301
(802) 257-4547 www.windhamregional.org



Ecological Resources

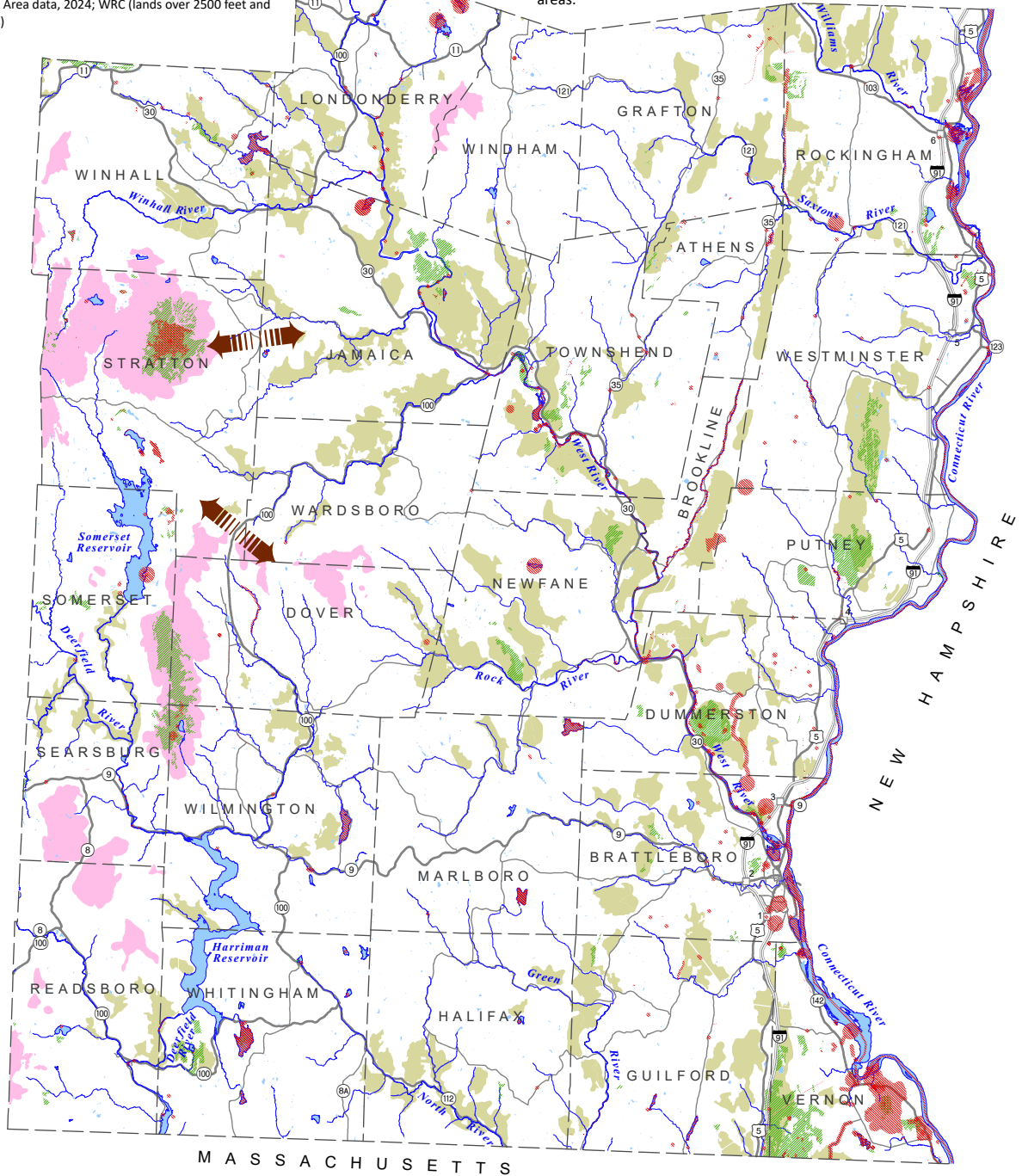
- Rare, threatened, or endangered species occurrence
- Significant natural community
- Deer wintering area
- Land over 2500 feet
- Regionally significant bear travel corridor

June 2026; u:\GIS\RegionalPlan2026\Maps\EcologicalResources.aprx

Note: This map should be used for general reference and planning purposes only.

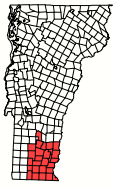
Data sources: Vermont Natural Heritage Inventory, 2026; Vermont ANR Deer Wintering Area data, 2024; WRC (lands over 2500 feet and bear travel corridors)

Black bear travel corridors, according to Forrest Hammond, biologist with the Vermont Department of Fish and Wildlife, are forested habitats that are regionally important and are used by large numbers of bears to access critical seasonal foods or to link bear ranges and sub-populations. Travel corridors are comprised of bear travel routes and may include one or more road crossing areas.

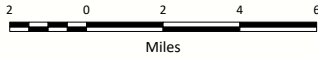


M A S S A C H U S E T T S

2026 Windham Regional Plan



139 Main St • Suite 505 • Brattleboro, VT 05301
(802) 257-4547 www.windhamregional.org



Educational Facilities

- Public school
- Independent school
- Library
- College

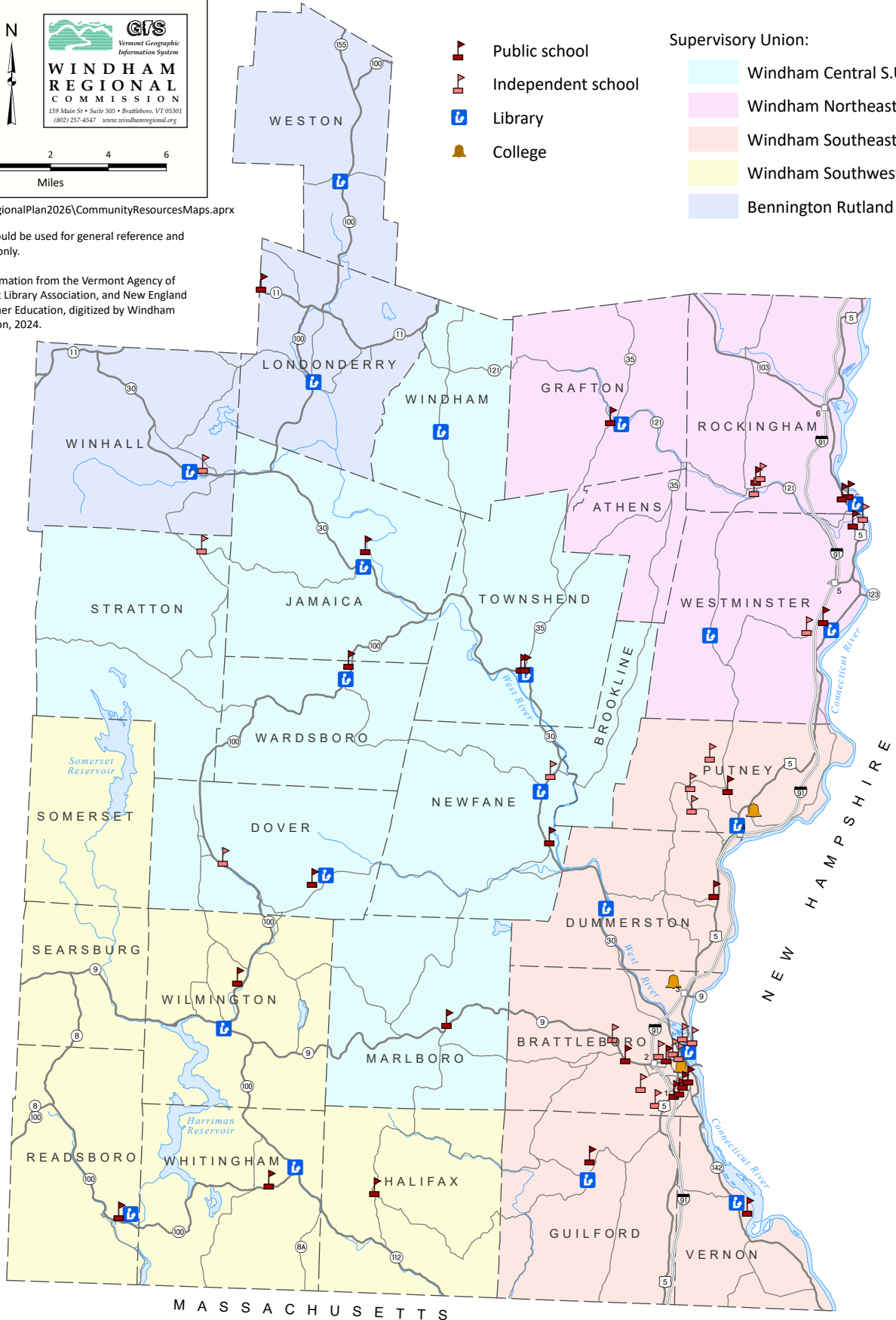
Supervisory Union:

- Windham Central S.U.
- Windham Northeast S.U.
- Windham Southeast S.U.
- Windham Southwest S.U.
- Bennington Rutland S.U.

June 2026; u:\GIS\RegionalPlan2026\CommunityResourcesMaps.aprx

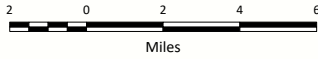
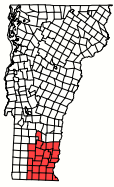
Note: This map should be used for general reference and planning purposes only.

Data sources: information from the Vermont Agency of Education, Vermont Library Association, and New England Commission of Higher Education, digitized by Windham Regional Commission, 2024.



M A S S A C H U S E T T S

2026 Windham Regional Plan



Distribution Circuit Capacity

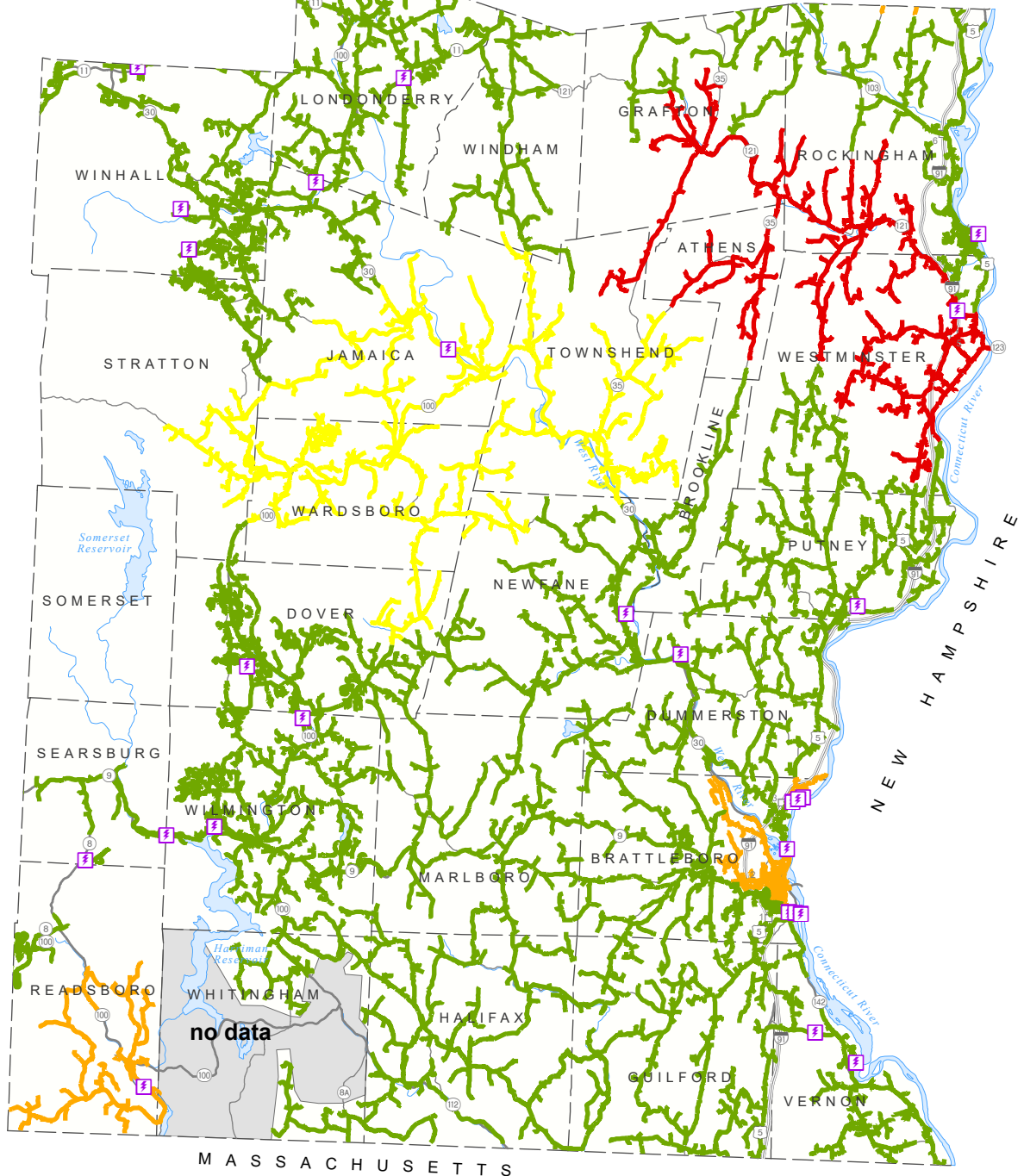
- Substation transformer with at least 20% capacity remaining
- Substation transformer with between 10% and 20% capacity remaining
- Due to system limitations, interconnections on this circuit may experience higher costs and delayed interconnections
- No data (Village of Jacksonville Electric Department)

f Substation

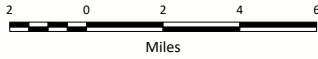
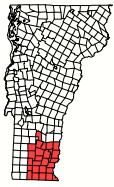
June 2026; u:\GIS\RegionalPlan2026\Energy.aprx

Note: This map should be used for general reference and planning purposes only.

Data sources: data from Green Mountain Power's Capacity Planning Map data



2026 Windham Regional Plan



Generation Sites

- Ⓟ Biogeneration site (<1MW)
- Ⓜ Hydro generation site < 1MW
- Ⓜ Hydro generation site > 1MW
- Ⓜ Wind generation site (>1MW)
- Ⓢ Solar generation site > 1 MW
- Ⓢ Solar generation site >= 100 KW and < 1 MW
- Ⓢ Solar generation site >= 15 KW and < 100 MW

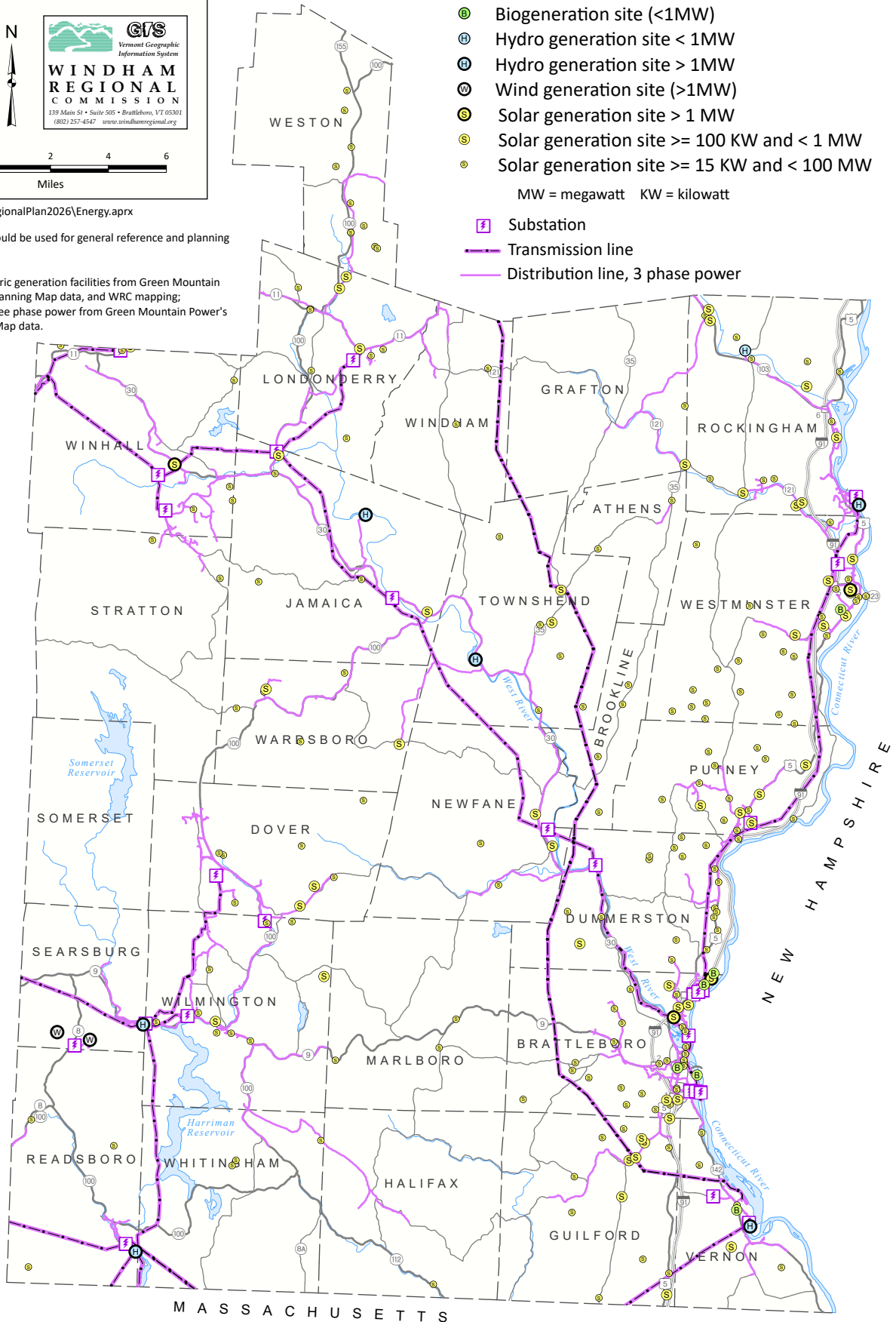
MW = megawatt KW = kilowatt

- Ⓡ Substation
- Transmission line
- Distribution line, 3 phase power

June 2026; u:\GIS\RegionalPlan2026\Energy.aprx

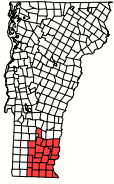
Note: This map should be used for general reference and planning purposes only.

Data sources: electric generation facilities from Green Mountain Power's Capacity Planning Map data, and WRC mapping; substations and three phase power from Green Mountain Power's Capacity Planning Map data.

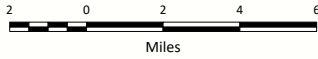


M A S S A C H U S E T T S

2026 Windham Regional Plan



139 Main St • Suite 505 • Brattleboro, VT 05301
(802) 257-4547 • www.windhamregional.org



Ground Mount Solar Potential

Substation

Electric transmission line

Distribution line with 3 Phase Power

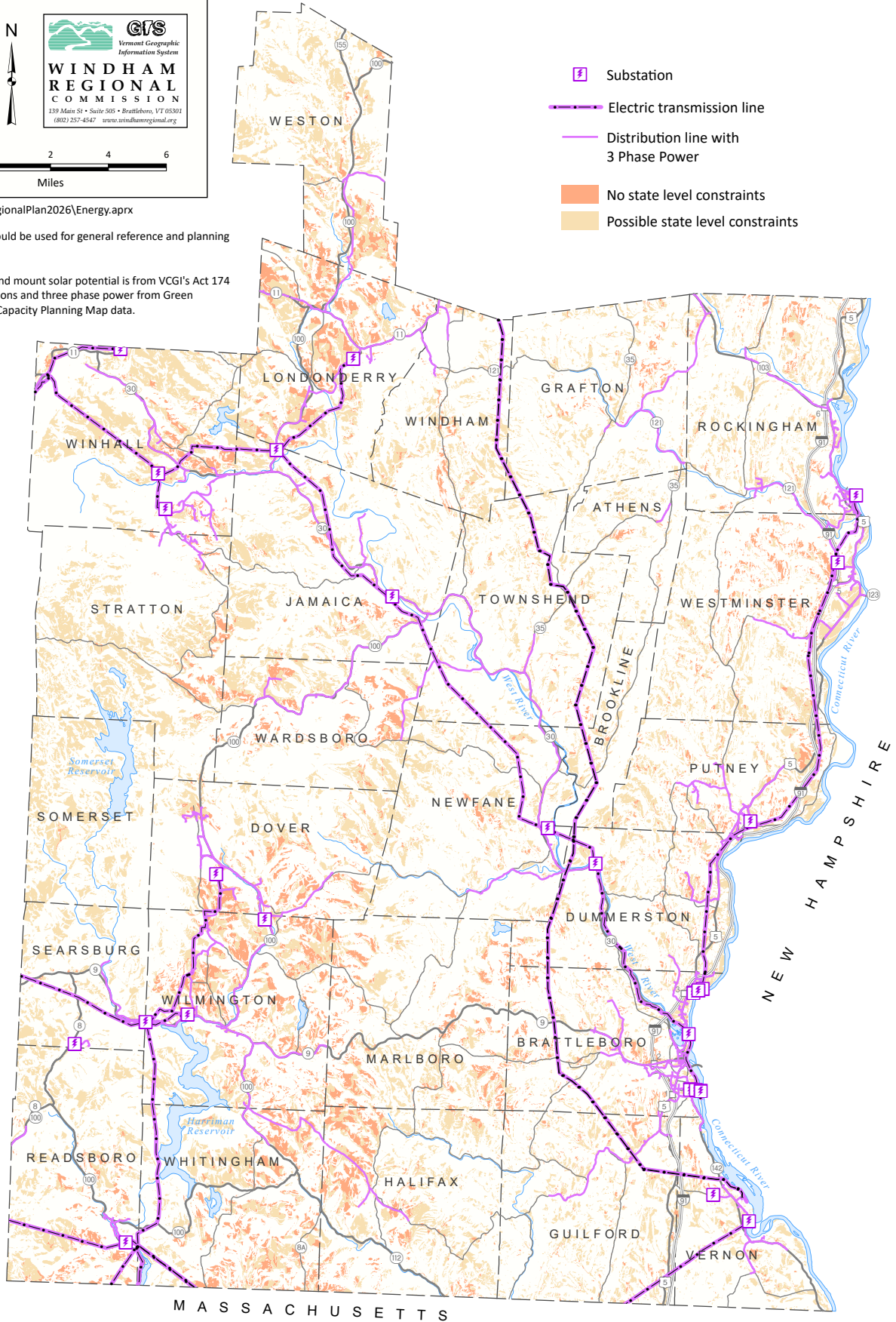
No state level constraints

Possible state level constraints

June 2026; u:\GIS\RegionalPlan2026\Energy.aprx

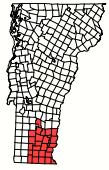
Note: This map should be used for general reference and planning purposes only.

Data sources: ground mount solar potential is from VCGI's Act 174 data, 2022; substations and three phase power from Green Mountain Power's Capacity Planning Map data.

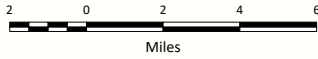


M A S S A C H U S E T T S

2026 Windham Regional Plan



139 Main St • Suite 505 • Brattleboro, VT 05301
(802) 257-4547 www.windhamregional.org



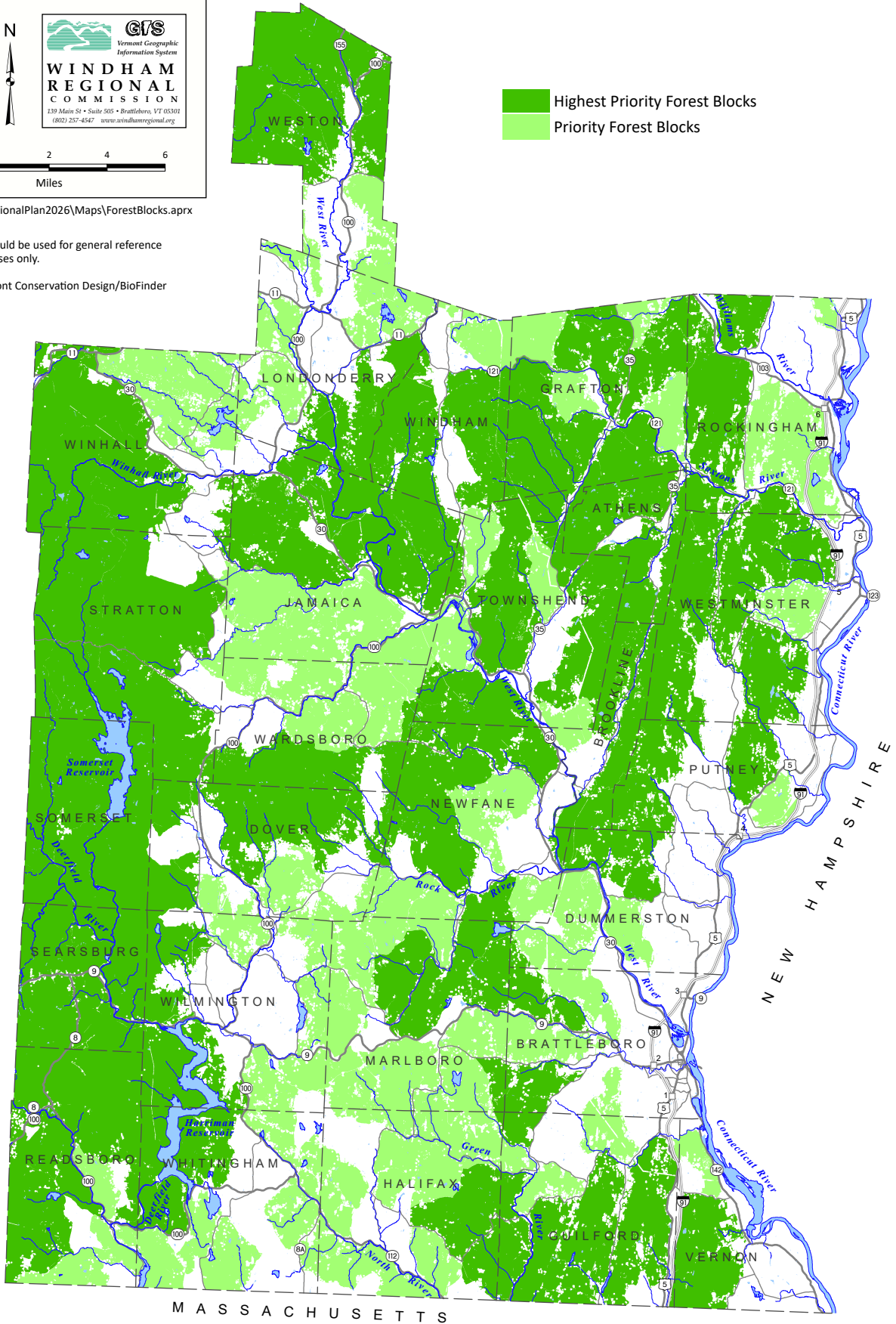
Forest Blocks

- Highest Priority Forest Blocks
- Priority Forest Blocks

June 2026; u:\GIS\RegionalPlan2026\Maps\ForestBlocks.aprx

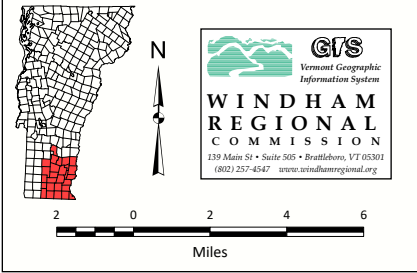
Note: This map should be used for general reference and planning purposes only.

Data source: Vermont Conservation Design/BioFinder






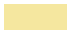







MASSACHUSETTS

2026 Windham Regional Plan



Future Land Use

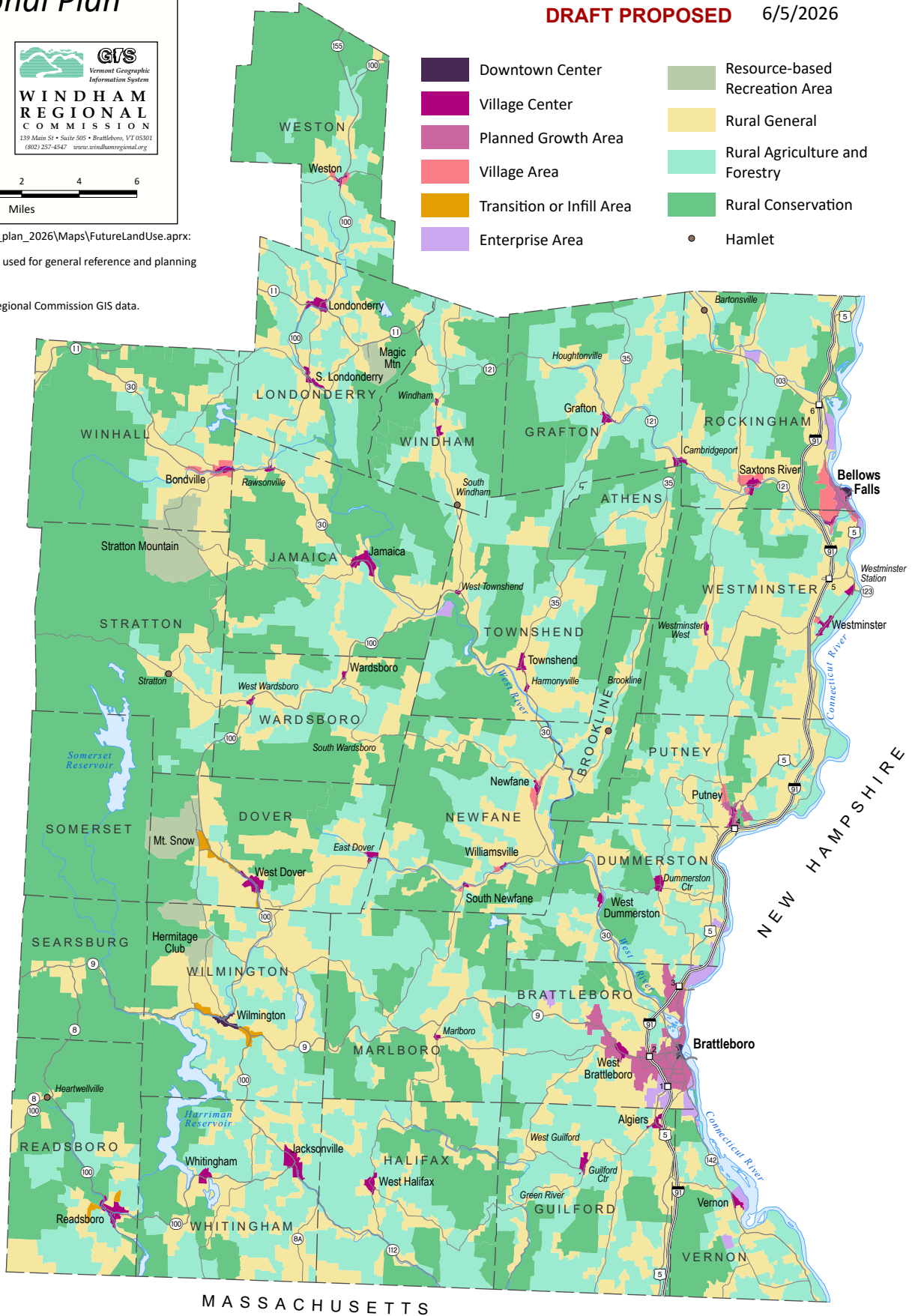
DRAFT PROPOSED 6/5/2026

- | | | | |
|---|---------------------------|---|--------------------------------|
|  | Downtown Center |  | Resource-based Recreation Area |
|  | Village Center |  | Rural General |
|  | Planned Growth Area |  | Rural Agriculture and Forestry |
|  | Village Area |  | Rural Conservation |
|  | Transition or Infill Area |  | Hamlet |
|  | Enterprise Area | | |

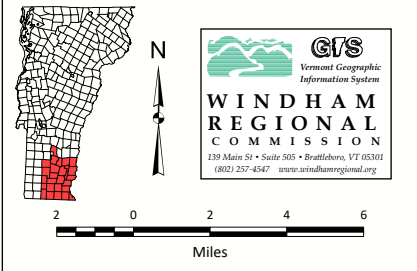
June 2026; U:\GIS\regional_plan_2026\Maps\FutureLandUse.aprx:

Note: This map should be used for general reference and planning purposes only.

Data source: Windham Regional Commission GIS data.



2026 Windham Regional Plan



Important Farmland Soils

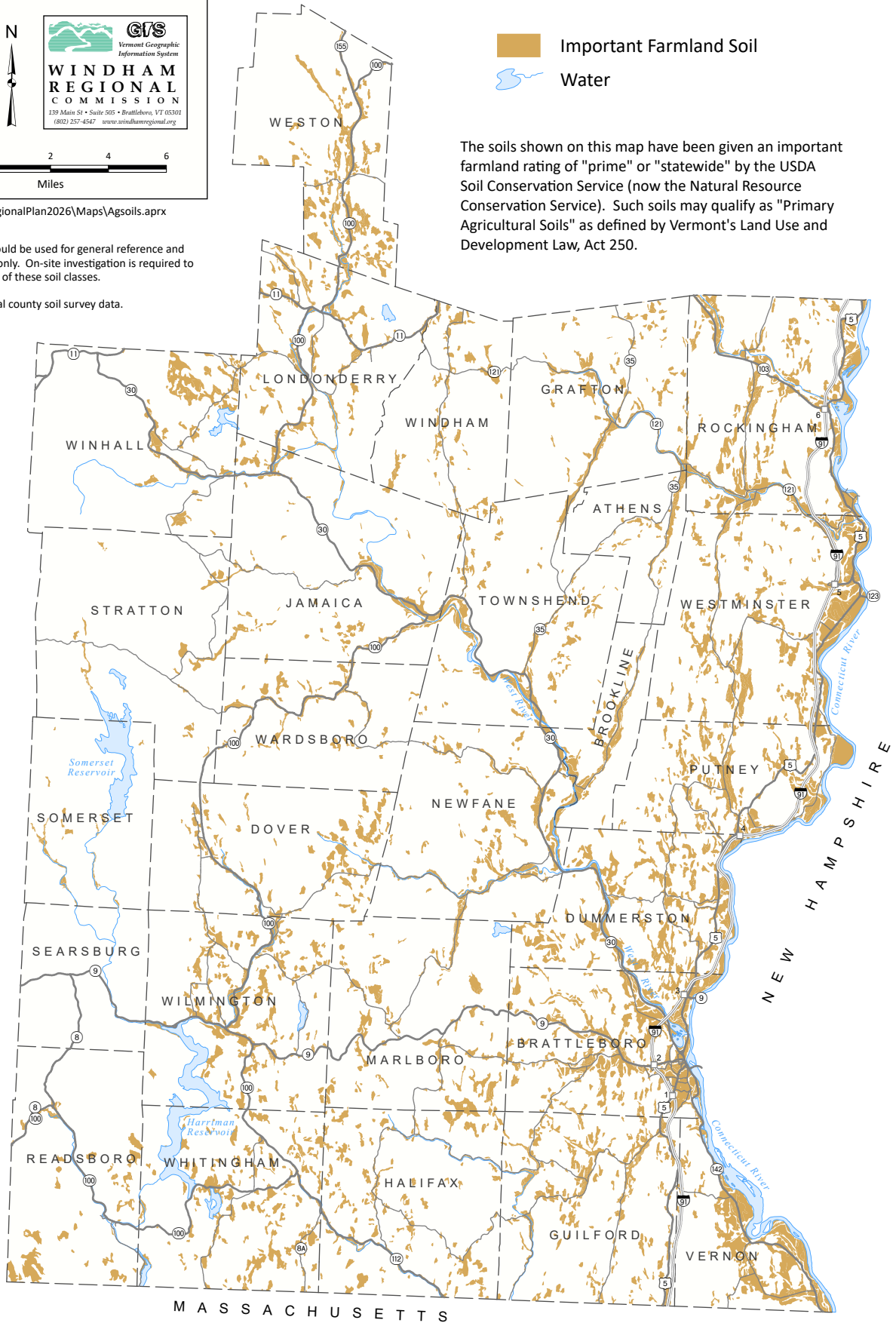
- Important Farmland Soil
- Water

The soils shown on this map have been given an important farmland rating of "prime" or "statewide" by the USDA Soil Conservation Service (now the Natural Resource Conservation Service). Such soils may qualify as "Primary Agricultural Soils" as defined by Vermont's Land Use and Development Law, Act 250.

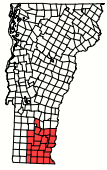
June 2026; u:\GIS\RegionalPlan2026\Maps\Agsoils.aprx

Note: This map should be used for general reference and planning purposes only. On-site investigation is required to verify the existence of these soil classes.

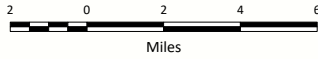
Data sources: digital county soil survey data.



2026 Windham Regional Plan



WINDHAM REGIONAL COMMISSION
 139 Main St • Suite 505 • Brattleboro, VT 05301
 (802) 257-4547 www.windhamregional.org



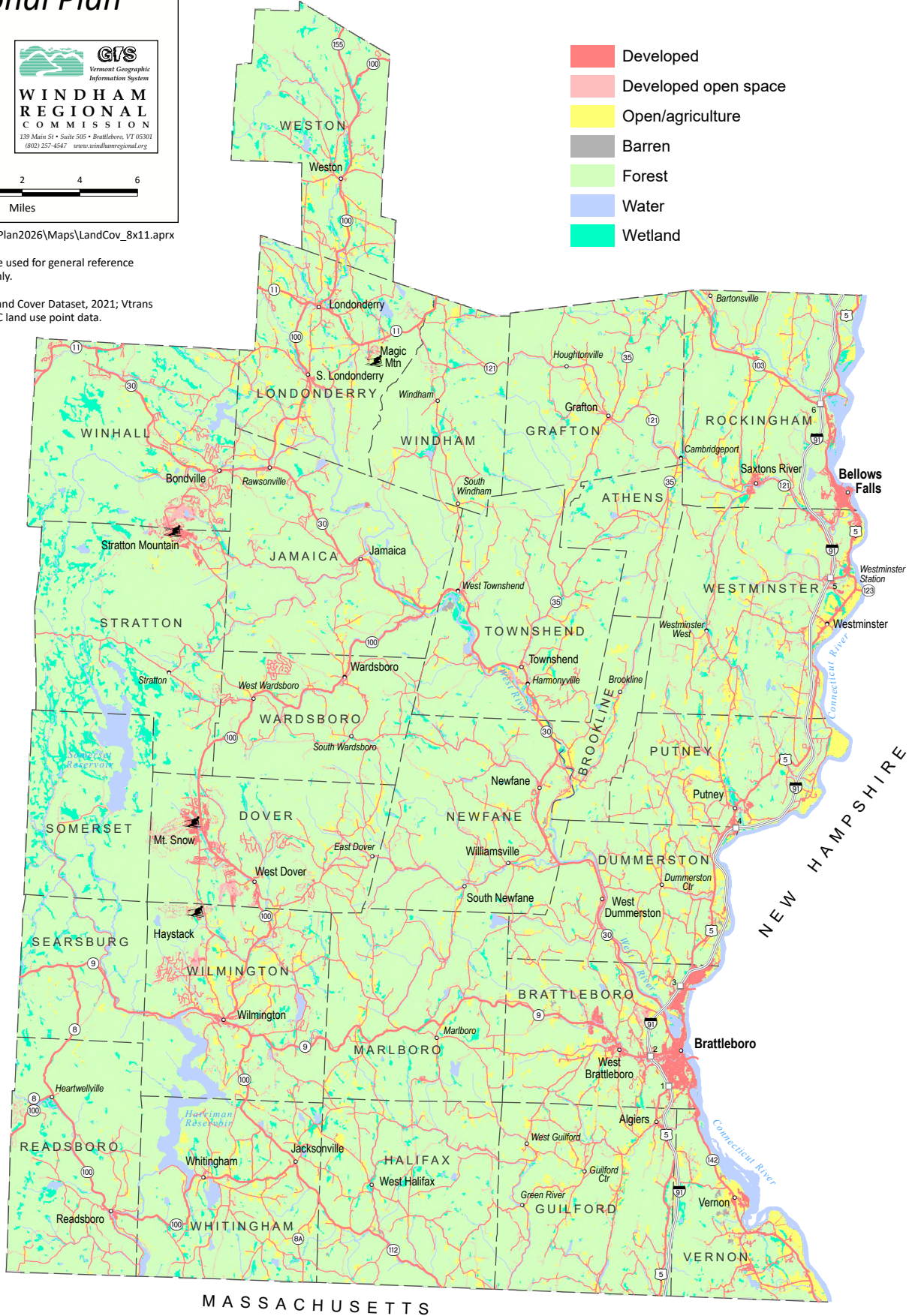
Existing Land Use/Land Cover

- Developed
- Developed open space
- Open/agriculture
- Barren
- Forest
- Water
- Wetland

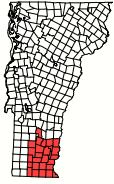
June 2026; u:\GIS\RegionalPlan2026\Maps\LandCov_8x11.aprx

Note: This map should be used for general reference and planning purposes only.

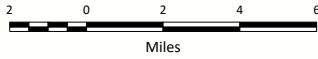
Data sources: National Land Cover Dataset, 2021; Vtrans road centerline data, WRC land use point data.



2026 Windham Regional Plan



139 Main St • Suite 505 • Brattleboro, VT 05301
(802) 257-4547 www.windhamregional.org



Public and Conserved Lands

Publicly-owned land:

- Federal
- State
- Town

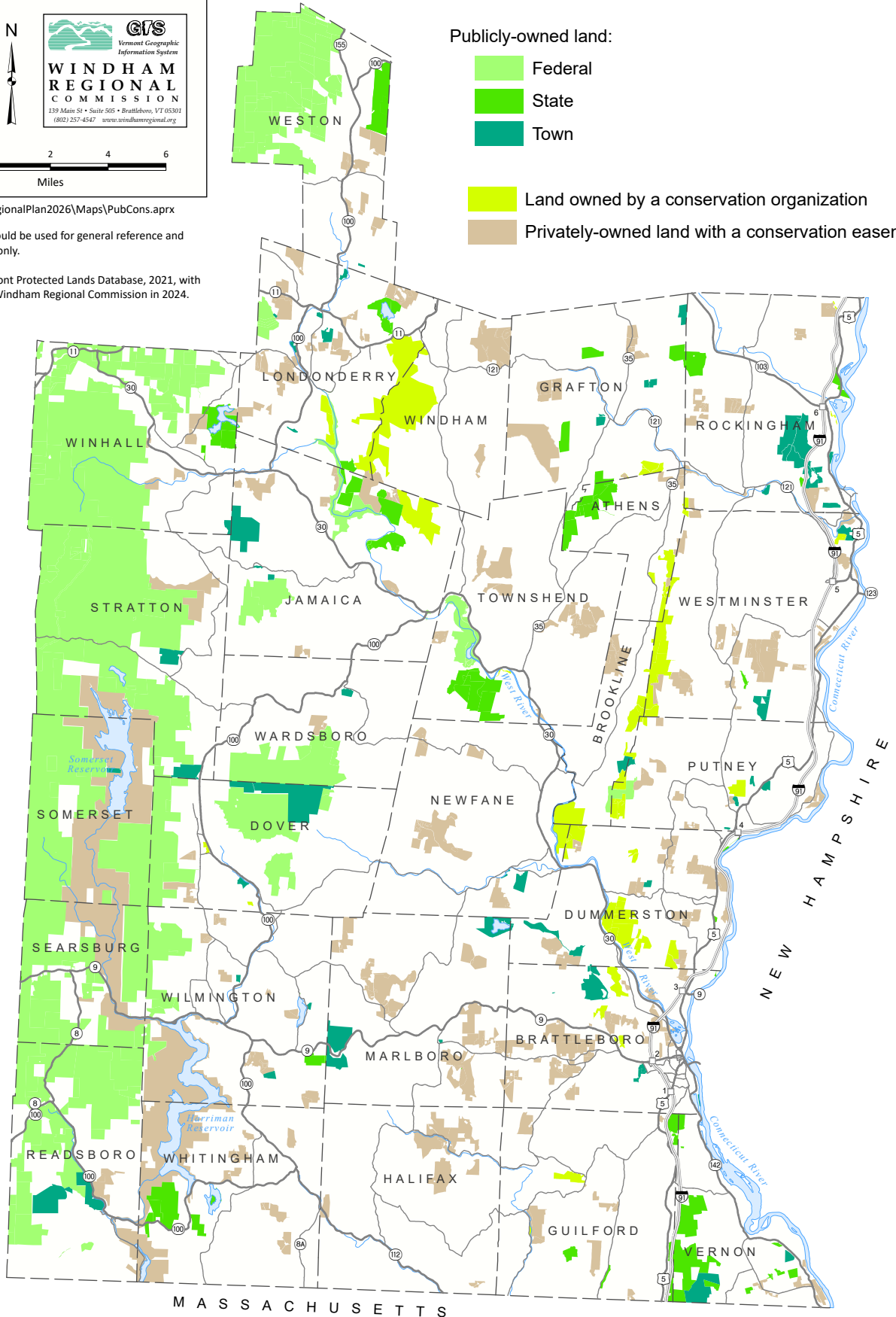
Land owned by a conservation organization

Privately-owned land with a conservation easement

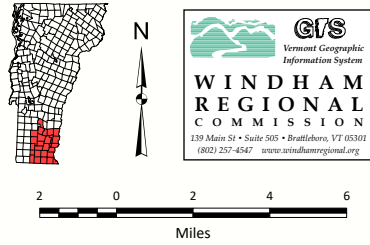
June 2026; u:\GIS\RegionalPlan2026\Maps\PubCons.aprx

Note: This map should be used for general reference and planning purposes only.

Data source; Vermont Protected Lands Database, 2021, with minor updates by Windham Regional Commission in 2024.



2026 Windham Regional Plan



Regional Development Pattern

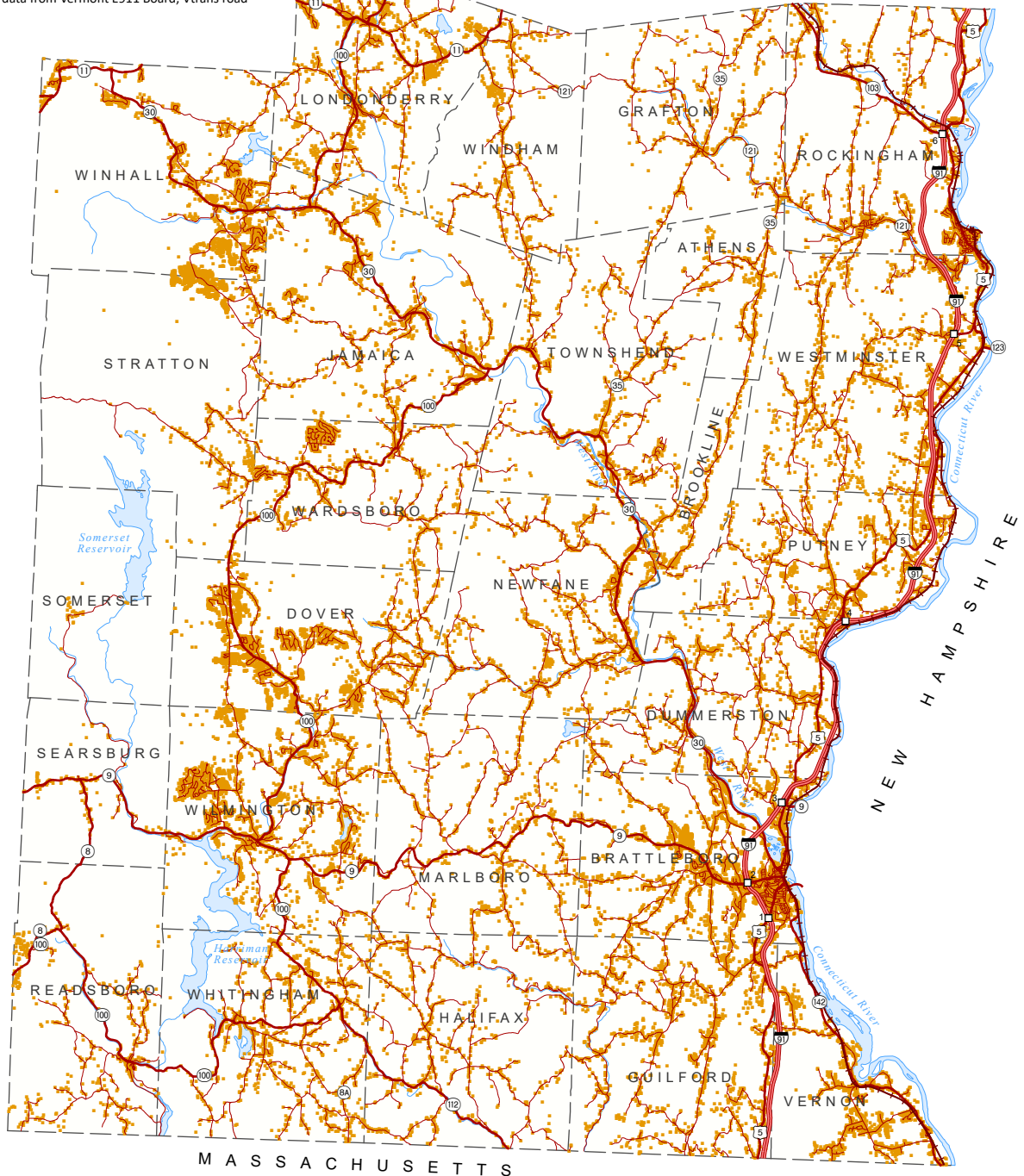
- Structures
- Railroad
- Interstate highway
- Federal, state, town highway (excluding Class 4 town highways)
- Water

This map attempts to show the pattern of development across the Region by displaying structures, roads, and railroads. While features other than the structures and roads displayed here can constitute development, defining these other feature and then mapping them would be difficult. By showing roads and structures, the map, taken in a regional context, should give the viewer a general idea of where in the Windham Region the majority of human activity and land modifications are located.

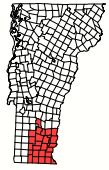
June 2026; u:\GIS\RegionalPlan2026\Maps\Development.aprx

Note: This map should be used for general reference and planning purposes only.

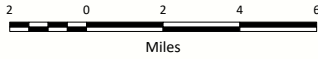
Data sources: ESITE data from Vermont E911 Board; Vtrans road centerline data.



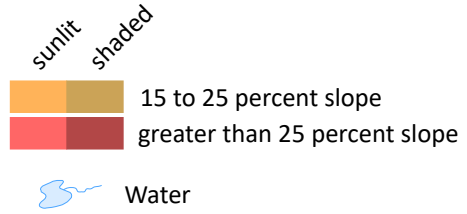
2026 Windham Regional Plan



139 Main St • Suite 505 • Brattleboro, VT 05301
(802) 257-4547 • www.windhamregional.org



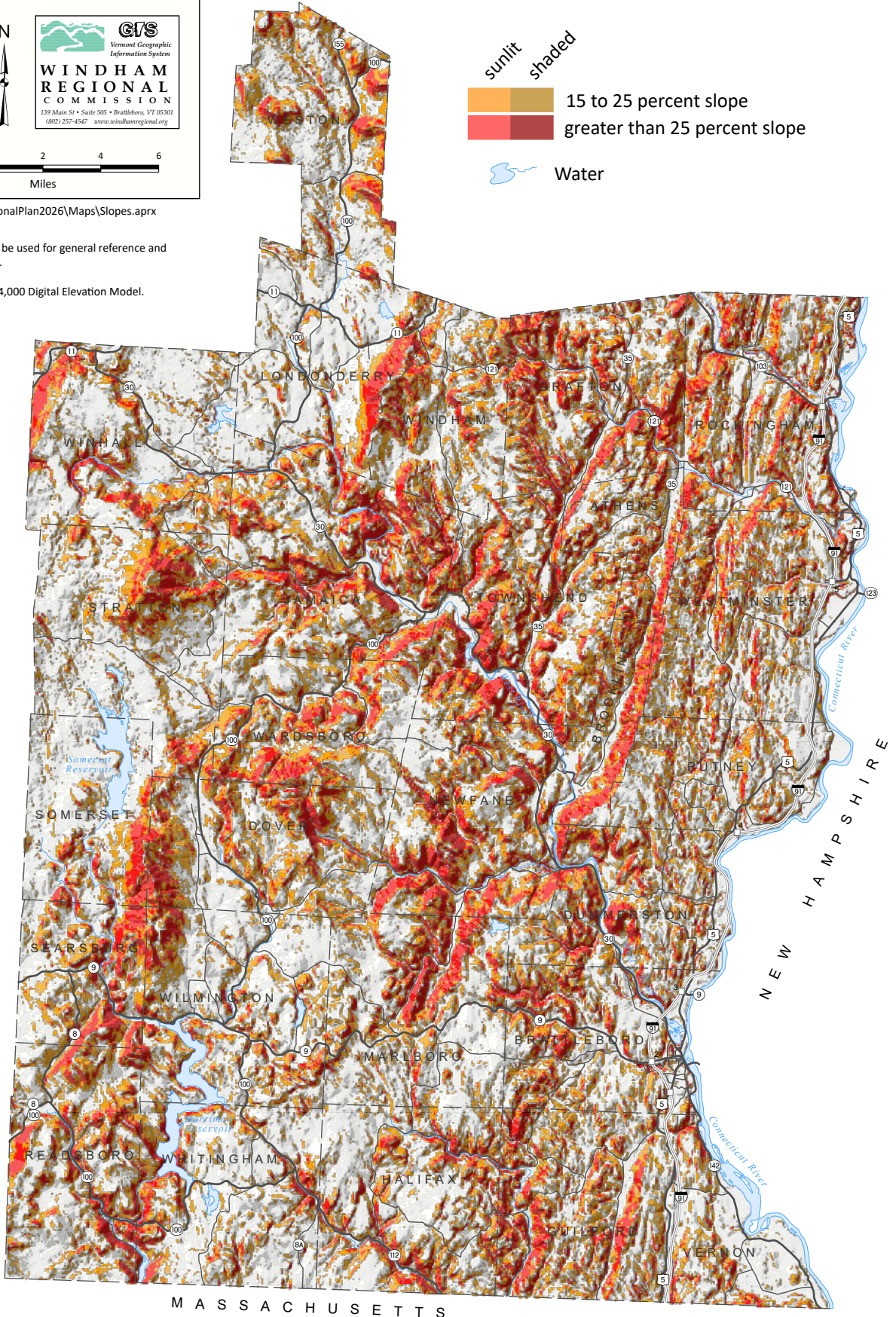
Steep Slopes



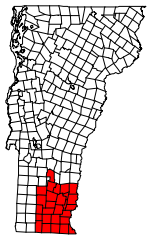
June 2026; u:\GIS\RegionalPlan2026\Maps\Slopes.aprx

Note: This map should be used for general reference and planning purposes only.


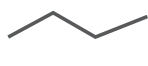
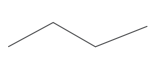

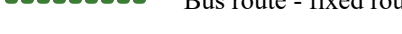
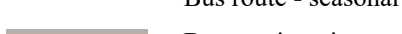
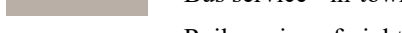








Data source: USGS 1:24,000 Digital Elevation Model.

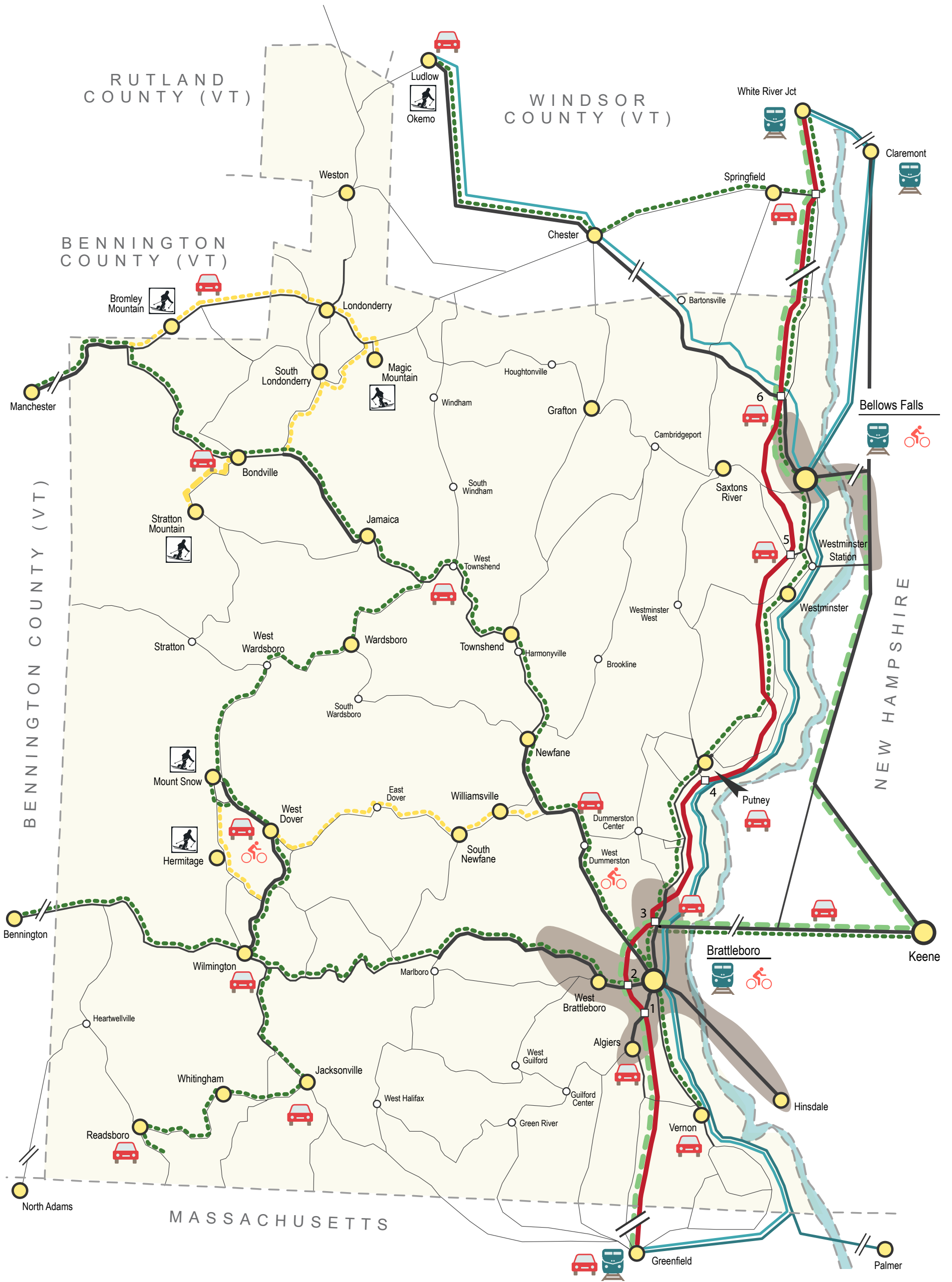


Future Transportation Network

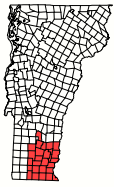


This map displays the major features of the transportation network of the Windham Region. The proximity and connection between these features is represented, but the true locations are approximate. Features and locations outside the Region are not exactly located and simply shown to illustrate their connection to features within the region.

-  Highway - higher traffic volume (Red = I-91)
-  Highway - moderate traffic volume
-  Highway - lower traffic volume
-  Bus route - inter-city
-  Bus route - fixed route
-  Bus route - seasonal
-  Bus service - in-town
-  Rail service - freight
-  Rail service - passenger
-  Train Station
-  Park and Ride Lot
-  Interstate exit, with number
-  Bicycle facility improvements
-  Ski resort
-  Major/minor Town or Village



2026 Windham Regional Plan





June 2026; u:\GIS\RegionalPlan2026\CommunityResourcesMaps.aprx

Note: This map should be used for general reference and planning purposes only.

Data sources: electric generation facilities from Green Mountain Power's Capacity Planning Map data; source protection areas and water supplies from Agency of Natural Resources, transmission lines from VCGI, all other data digitized by WRC.

Utilities

Electric utility franchise area:

-  Village of Jacksonville Electric Dept
-  Green Mountain Power

Groundwater source protection area

Surface water source protection area







Public water supply source active and inactive

Closed landfill

Transfer station

Electric transmission line

Electric generation facility:

-  Solar
-  Hydro
-  Biogeneration
-  Wind
-  > 0.1 mW capacity
-  > 1 mW capacity

Municipal sewer system

Municipal sewer and water system

